

DEPARTMENT OF
ECOLOGY
State of Washington

Ecology's Water Quality Grants and Loans Funding Programs Overview



Contact Information

Daniel Thompson

Department of Ecology

Water Quality Program

PO Box 47600

Lacey WA 98504-7600

Phone: 360-407-6510

Email: daniel.thompson@ecy.wa.gov

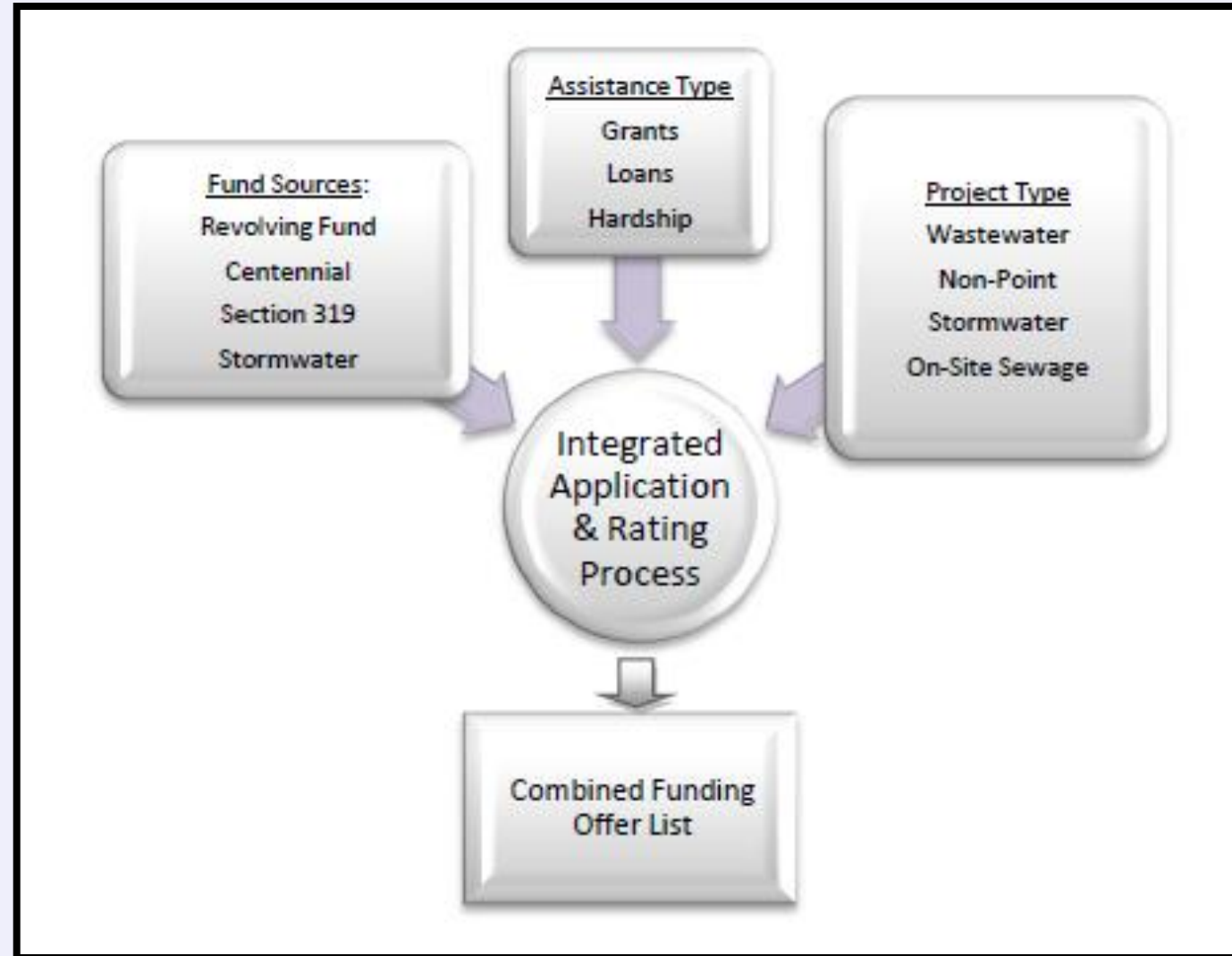


Organization

- Funding Sources (9 slides)
- Eligibilities (11 slides)
 - Who
 - Project categories
 - Special subcategories
- Funding Amounts (4 slides)
- Funding Cycle (1 slide)
- Rating Process (1 slide)
- Requirements for CWSRF-funded Infrastructure Projects (9 slides)
 - A separate presentation if there's sufficient time



Integrated Funding Program





Infrastructure Funding Sources

Water Pollution Control Revolving Fund	CWSRF (or SRF)
Stormwater Financial Assistance Program	SFAP
Centennial Clean Water Program	Centennial



Clean Water State Revolving Fund

- Low interest rate loan program
- Funded through:
 - Federal grant
 - 20% state match
 - Repaid principal & interest
- Funds wastewater and stormwater facility projects and some onsite sewage system projects
- Eligible applicants:
 - Public bodies





Stormwater Financial Assistance Program

- Grant program
- Funded from state sources
- Funds stormwater facility projects not required by National Pollutant Discharge Elimination System (NPDES) permits
- Eligible applicants:
 - Cities, counties, port districts





Centennial Clean Water Program

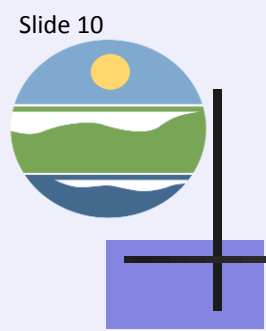
- Grant program
- Funded from state sources
- Funds hardship wastewater facility construction (also nonpoint activity projects)
- Eligible applicants:
 - Public bodies





Public Bodies Eligible to Apply

- **Local Governments**
- **Federally Recognized Tribes**
- **Special Purpose Districts**



Categories of Infrastructure Projects Eligible

- **Wastewater Facility Projects**
- **Stormwater Facility Projects**
- **Onsite Sewage System Projects**
- **Plus, special subcategories:**
 - **Financial hardship**
 - **Facility preconstruction**
 - **Green Project Reserve**



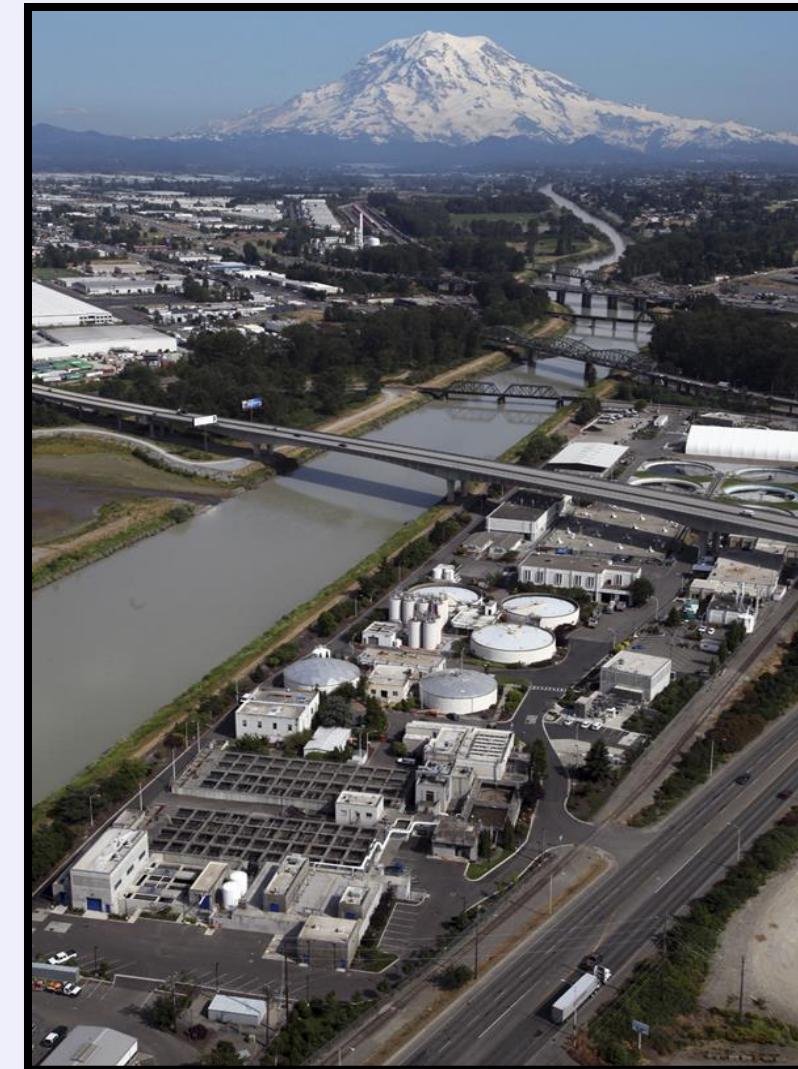
Wastewater Facility Projects

■ Eligible for CWSFR & Centennial (hardship construction-only)

■ Examples:

- Planning & Design of wastewater infrastructure
- Construction (includes administration, limited change orders, limited bid overruns, supplies/tools)

- Upgrades, expansion, new
- Collection sewers & pump stations
- Infiltration & inflow (I&I) correction
- Combined sewer overflow (CSO) abatement
- Large onsite systems (LOSS)





Stormwater Facility Projects

■ Eligible for CWSRF & SFAP

■ Examples:

- Planning, Design, & Construction of stormwater infrastructure
- Implementation of low impact development (LID) techniques
- Projects required by a NPDES permit
 - CWSRF-only

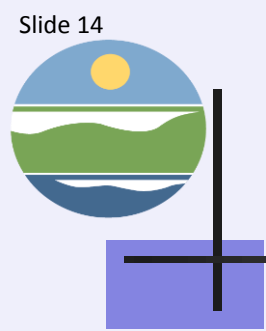




Onsite Sewage System Local Loan Programs

- Eligible for CWSRF & Centennial
- For repair & replacement of residential & small commercial systems





Ineligible Projects

- Non clean-water projects (e.g., roads, bridges, drinking water systems)
- Exclusively industrial projects
- Water quantity
- Flood control (unless clear water quality impact)
- Operation & maintenance costs



CWSRF & Centennial: Hardship – Wastewater Facility Construction



- For wastewater facility construction projects in smaller, financially distressed communities
- Criteria:
 - $\leq 25,000$ people paying for project
 - Sewer fees for existing residential ratepayer $\geq 2\%$ of median household income (MHI) without subsidy
- Subsidy options:
 - Centennial grant
 - Forgivable principal loan
 - Further reduced interest rates – down to 0%
- Subsidy is for existing residential need
 - Standard loan for rest of project



CWSRF & Centennial: Hardship – Onsite Sewage Systems

- For local loan repair & replacement program
- A combination of grant & subsidized loan
 - Grant up to \$500,000
 - Final interest rate ↓ based on loans to homeowners with incomes <80% of county MHI and “small commercial enterprises”





CWSRF: Preconstruction & Hardship



■ For wastewater/stormwater facility projects in small, less affluent communities

- Comprehensive sewer planning
- Feasibility studies
- Site-specific facility planning
- Value engineering
- Environmental review
- Pre-design reports & Design plans and specs

■ Criteria for funding:

- $\leq 25,000$ people paying for project
- MHI \leq State MHI

■ Criteria for hardship (50% forgivable principal loan):

- $\leq 25,000$ population
- MHI $\leq 80\%$ State MHI



SFAP: Hardship

■ Criteria:

- Service area population $\leq 25,000$
- MHI $\leq 80\%$ State MHI

■ Subsidy:

- Match reduced from 25% to 15%



Green Project Reserve (GPR)



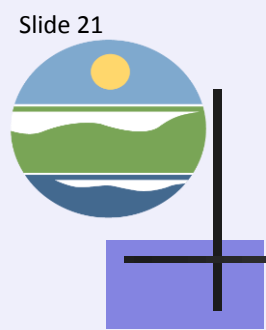
- EPA requires 10% of the Capitalization Grant for CWSRF be directed to GPR projects
- Can be a stand-alone or part of a larger project
- Must be eligible for CWSRF funding, willing to accept a loan, & meet EPA's criteria for:
 - Green Infrastructure
 - Energy Efficiency
 - Water Efficiency
 - Environmentally Innovative
- May include 25% forgivable principal loan



Average Funding SFY11—SFY17

CWSRF Loans	\$113 million
SFAP Grants*	\$32 million
Centennial Grants	\$18 million

*** = Includes only SFY16 & SFY17**



Set-asides

CWSRF Loans
10% of Capitalization Grant for GPR
75% for Facilities
20% for Nonpoint Activities
5% for Preconstruction
Forgivable Principal—Depends on Capitalization Grant
SFAP Grants
100% for Stormwater Projects in Cities, Counties, & Ports
Centennial Grants
33% for Hardship Facilities
33% for Nonpoint Source Activities
33% Competitive



Funding Caps

CWSRF Loans
50% of GPR, Facilities, and Activities categories per applicant
20% of Preconstruction category per applicant
SFAP Grants
\$5 million per recipient
\$250,000 per planning or design project (counts against the \$5M)
Centennial Hardship Wastewater Facility Construction
\$5 million per project



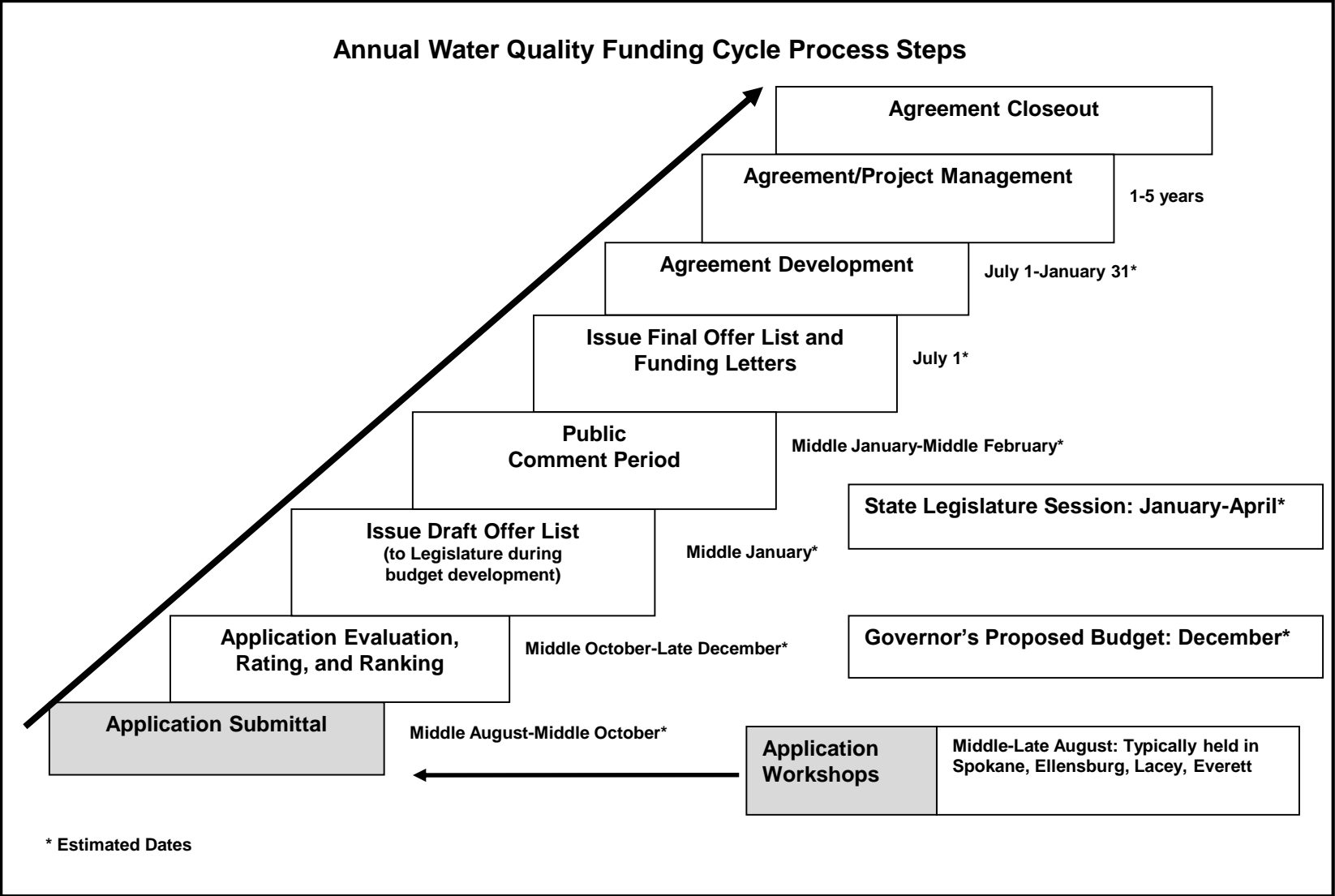
CWSRF Interest Rates

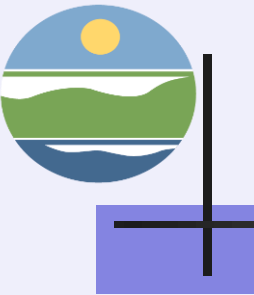
- Based on market rate (MR) for tax exempt municipal bonds

6-20 year loans	60% of MR
1-5 year loans	30% of MR



Annual Funding Cycle





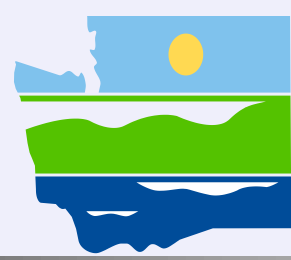
Rating Criteria & Points

Scored Form	Points Available	Points Required
Funding Request Form	0 – 15	---
Scope of Work - Additional Tasks Form	0 – 75	---
Task Costs/Budget Form	0 – 135	---
Water Quality and Public Health Improvements Form	0 – 500	250
Project Team Form	0 – 65	---
Project Planning and Development Form	0 – 60	---
Project Schedule Form	0 – 100	---
Financial Hardship Form	0 or 50	---
Total	0 – 1,000	600



For Additional Information

- <http://www.ecy.wa.gov/programs/wq/funding/funding.html>
- <http://www.ecy.wa.gov/programs/wq/funding/Res/Resources.html>



DEPARTMENT OF
ECOLOGY
State of Washington

QUESTIONS?