

# Align Salmon and Water Grants/Loans Workgroup

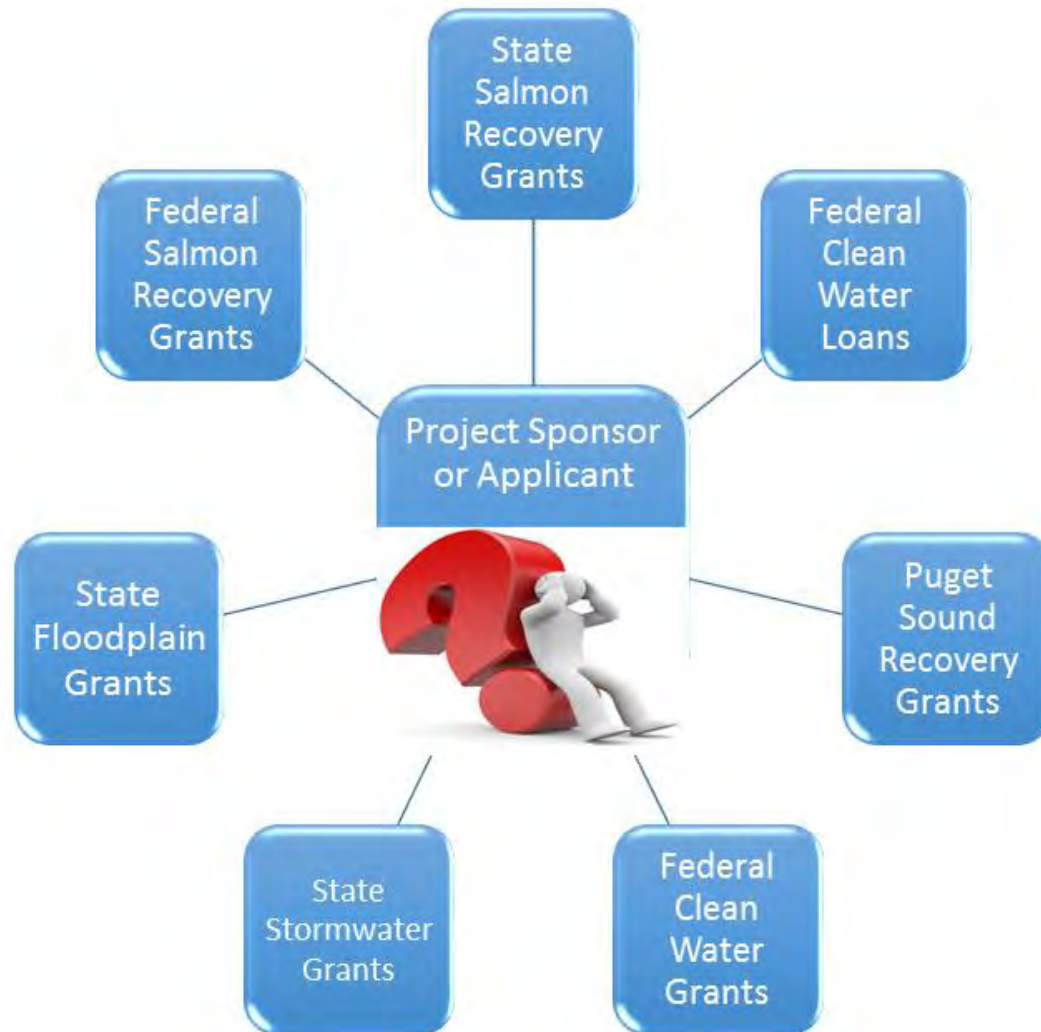
## Governor's Results WA Improvement Project



### Workgroup Members:



## Problem/Opportunity: Challenge to Navigate Process





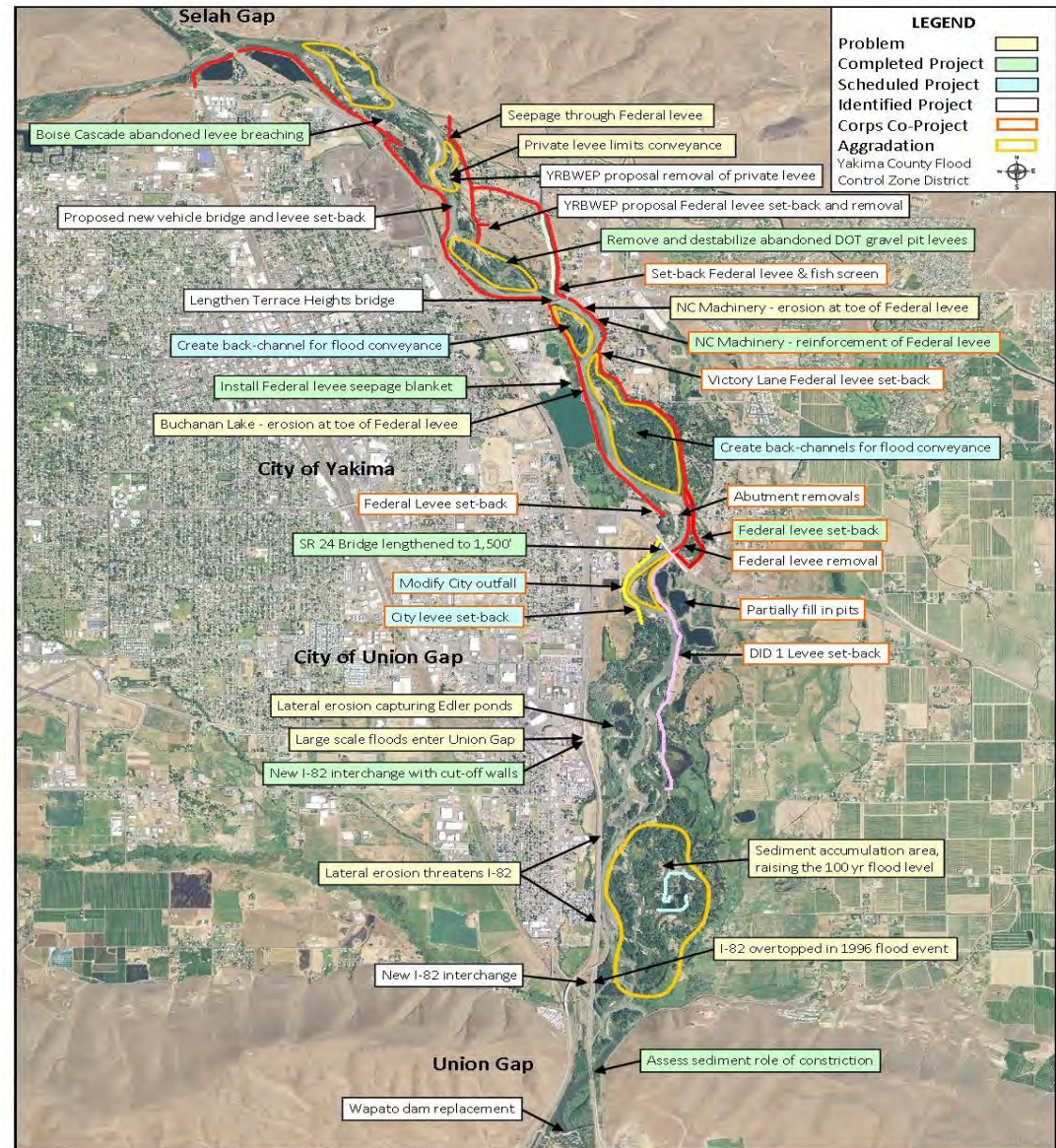
## Example Project:

Multiple Grants  
Multiple Partners  
Multiple Benefits



Naches River, Yakima County Floodplains by Design  
Photo Credit: Michelle Gilbert, Ecology

### Gap to Gap Problems & Projects



Risk Management Implementation Plan for Gap to Gap  
Credit: Yakima County

**Detailed Action Plan:**

Task	Expected Outcome	Status	Due Date
<b>Create Partner Workgroup</b>	An inter-agency workgroup to facilitate collaboration opportunities, strategic planning, efficiencies amongst natural resource funders.	Active	Ongoing – monthly
<b>Single Portal</b>	Single clearinghouse location to find all water and salmon grant/loan opportunities.	Draft at: <a href="http://data.wa.gov">data.wa.gov</a> .	November 2017
<b>Align Guidance Policies where possible</b>	Shared guidance and procedures for certain project types.	<ul style="list-style-type: none"> <li>ECY: Use of RCO Acquisition guidance - ECY internal workgroup prep for EGG and ELT</li> <li>RCO: New In-stream Valuation collaborated w/ECY CRO WR</li> </ul>	December 2017
<b>Consistent Definitions:</b> <ul style="list-style-type: none"> <li><b>Readiness to Proceed</b></li> <li><b>Restoration Design Standards</b></li> <li><b>Budget Template/Tool</b></li> </ul>	Agencies use consistent terminology and deliverables with grantees where possible for certain project types. Budget Tool for multi-phase/multi-funder project applications	Proposal ready for submittal to workgroup	December 2017
<b>Mapping of Investments</b>	Demonstrate where agencies maximize environmental outcomes. Increase public transparency.	Annual project lists on single ArcGIS map – to do	December 2017
<b>Common Progress Reporting and Measures</b>	Amount of time grantee spends reporting is reduced. Communications between grantee and multiple funders is improved.	Inconsistent databases; inconsistent, numerous federally required metrics	On Hold

## **Strategy:** Single Portal to help find a Grant or Loan

- Display all funding information in a single clearinghouse location
- Use [data.wa.gov](http://data.wa.gov) to help customers find information quickly



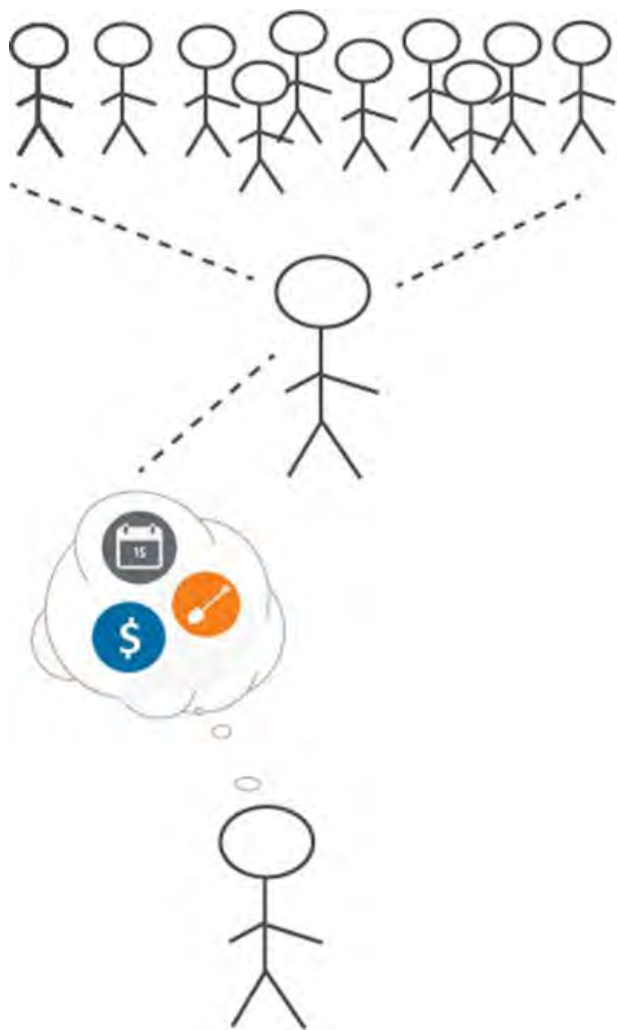
## Strategy: User-centered design



- Easy to use search tools
- Relevant information - quick filters
- Up-to-date
- Comprehensive

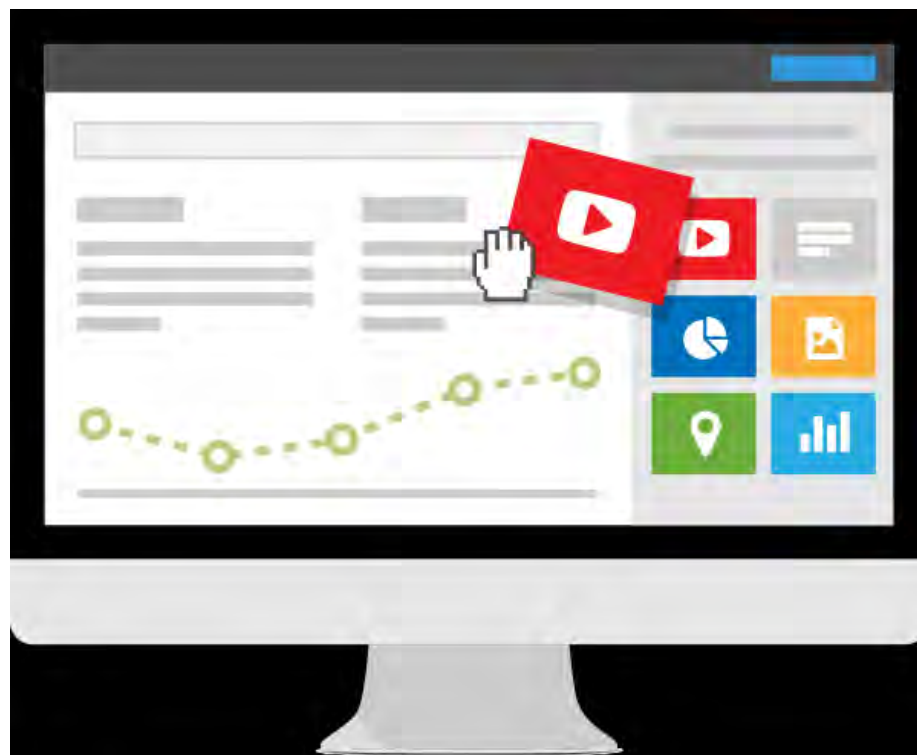


## Strategy: Streamlined Management



- Easy annual update
  - One **flat file** feeds multiple filtered views (**NOT** a database)
- Accessible
- Authoritative

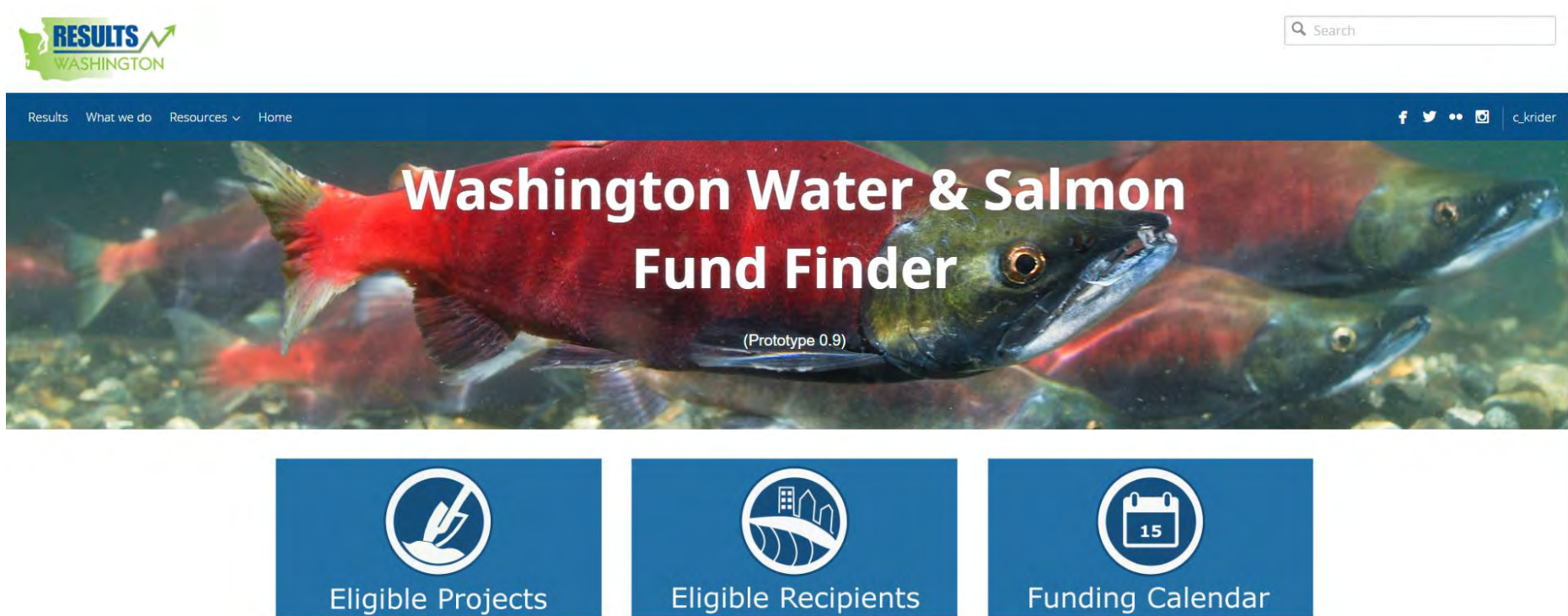
## Platform: Socrata Perspectives





# Washington Water & Salmon Fund Finder

<https://fundfinder.wa.gov>



# Washington Water & Salmon Fund Finder

<https://fundfinder.wa.gov>

## About Washington Fund Finder

The Washington Water & Salmon Fund Finder (WWSFF) is a grant and loan search tool that stores natural resource funding opportunities throughout Washington.

Grantees can use the tool to search, track, and prepare for potential funding opportunities.

Use the search buttons above to search multiple grant and loan opportunities that support salmon and water projects in your community.

To share your thoughts or to offer suggestions for improving the tool, please take our short survey below.



# Washington Water & Salmon Fund Finder

<https://fundfinder.wa.gov>

## Funding News

### New Fund Finder Presented at IACC

The multi-agency Align Salmon and Water Grants / Loans Workgroup has developed a draft first-generation portal for people searching for water and salmon grant and loan information.

The portal provides visitors with a one-stop shop for water and salmon grant and loan opportunities in Washington.

[Learn More](#)

### Save the Date! Floodplains by Design Workshop

The Floodplains by Design Management Team (The Nature Conservancy, state Department of Ecology and Puget Sound Partnership) is planning an informative and interactive learning exchange for Wednesday, December 6, 2017.

[Learn More](#)

### Salmon Recovery - Funding Results

Salmon projects will be approved by the Salmon Recovery Funding Board at the December board meeting.

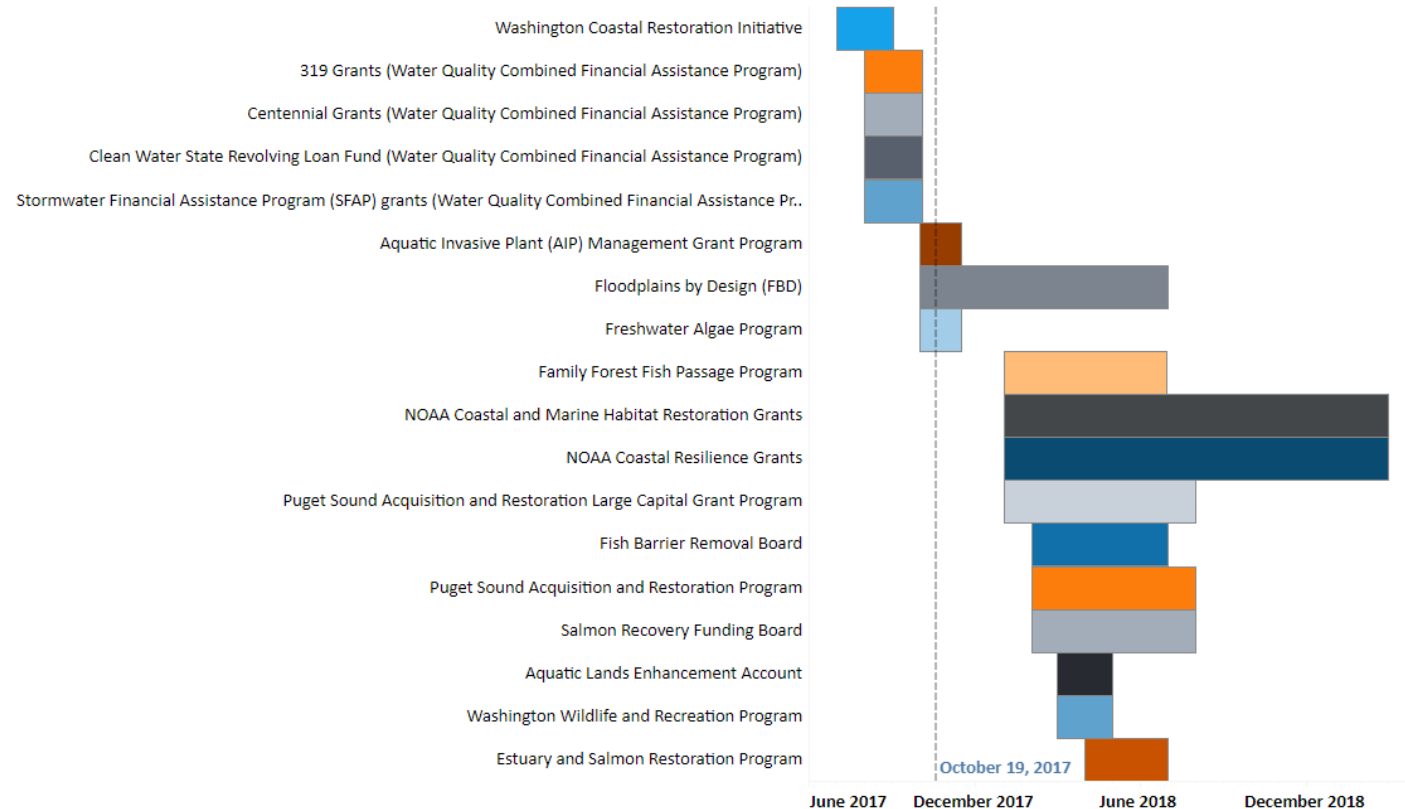
Find out more information about salmon recovery on the Recreation and Conservation Office's website. View funding results for the past several grant rounds to see the kinds of grant programs and projects that RCO funds.

[Learn More](#)

# Washington Water & Salmon Fund Finder

<https://fundfinder.wa.gov>

## Funding Program Opportunities (Open / Close Dates) - Gantt View





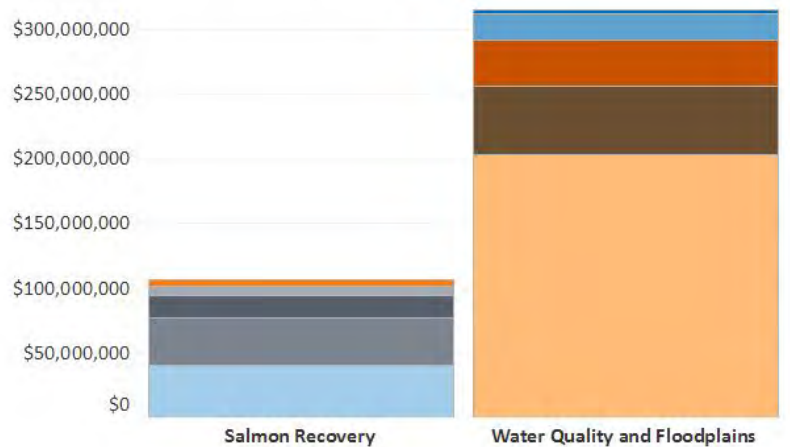
# Washington Water & Salmon Fund Finder

<https://fundfinder.wa.gov>

## Funding for cities and communities

## Support for water and salmon

Federal and State Funding Levels for Water Quality, Floodplains and Salmon Recovery  
2015-17 Biennium



+ a b | e a u  
17 views

Share Download



# Washington Water & Salmon Fund Finder

<https://fundfinder.wa.gov>

## Yakima County Levee Removal

Levee removal decreases flood risk for community and helps salmon.

This project will remove 500 feet of the Naches River levee that directs the river against the Town of Naches levee, reducing the risk of levee failure for the community. The project also will buy of 21 acres of floodplain behind the removed levee and build channels to reconnect the floodplain. The work will increase off-channel habitat, places where salmon can rest, feed, and hide from predators. The lower Naches River is part of a basin-wide recovery plan, supporting bull trout and steelhead, both of which are listed under the federal Endangered Species Act, as well as other salmon species.



# Washington Water & Salmon Fund Finder

<https://fundfinder.wa.gov>



--> [Fund Finder Library](#)

# Washington Water & Salmon Fund Finder

<https://fundfinder.wa.gov>



## Help Us Improve

To share your thoughts or to offer suggestions for improving the tool, please take our short survey [here](#).

If you'd like to contribute your program information to the Fund Finder or have any questions contact:

Pat Brommer (Washington State Department of Ecology) (360) 407-6566, [patricia.brommer@ecy.wa.gov](mailto:patricia.brommer@ecy.wa.gov) or  
Tara Galuska (Washington Recreation and Conservation Office) (360) 902-2953, [Tara.Galuska@rco.wa.gov](mailto:Tara.Galuska@rco.wa.gov)



## Next Steps

- **10/24/2017 to 11/14/2017** -- Stakeholder review.
- **12/01/2017** -- Activate [www.fundfinder.wa.gov](http://www.fundfinder.wa.gov) (Ver. 1.0).
- **2018 and beyond** -- Add additional funding opportunities.

Stakeholder Review Site:

<https://data.results.wa.gov/stories/s/Washington-Water-Salmon-Fund-Finder/bsre-nhqn>



Questions??