



Making Water: Streamflow Restoration

Rebecca Brown, AICP

Streamflow Restoration Planner, Department of Ecology

Nanette Graham, P.E.

Director of Capital Planning and Development, Washington State Department of Corrections



Contents

- 1 Introduction and Overview
- 2 Basin Planning
- 3 Grant Program
- 4 Case Study: Reclaimed water project in the Goldsborough Creek watershed
- 5 Questions

*We manage water resources to meet the needs of people
and the natural environment, in partnership with
Washington communities.*



WATER for PEOPLE, FARMS & FISH



3



Key elements of RCW 90.94: Streamflow Restoration

- Homebuilding.
- Basin Planning.
- Funding.
- Metering Pilot Program.
- Legislative Task Force.
- Reporting to Legislature.



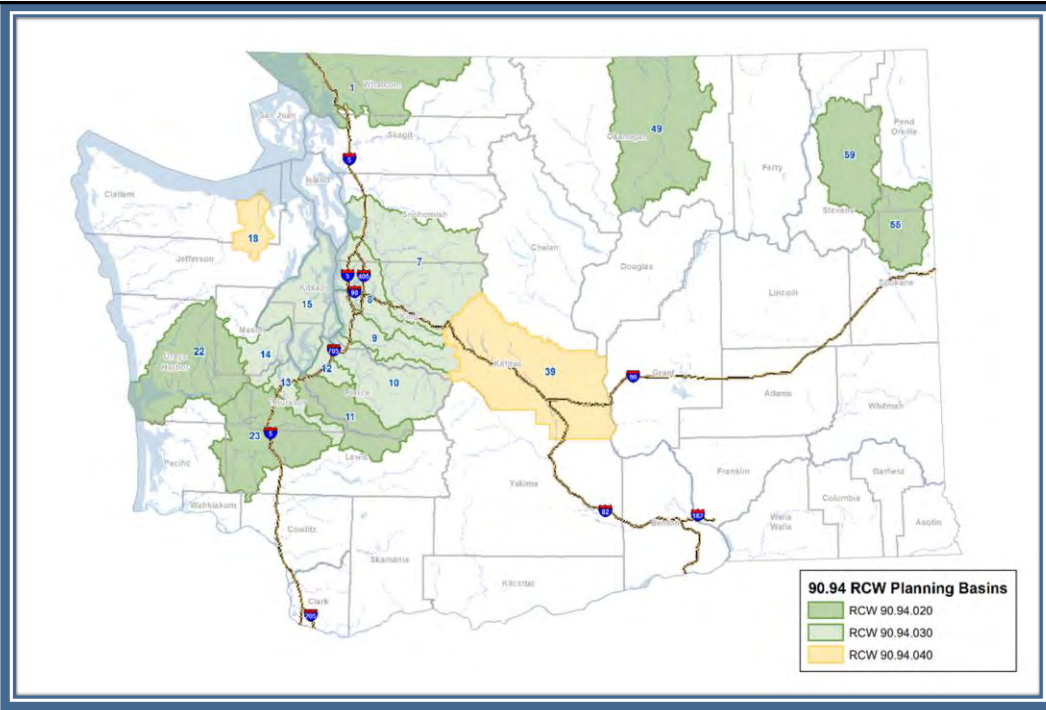
4

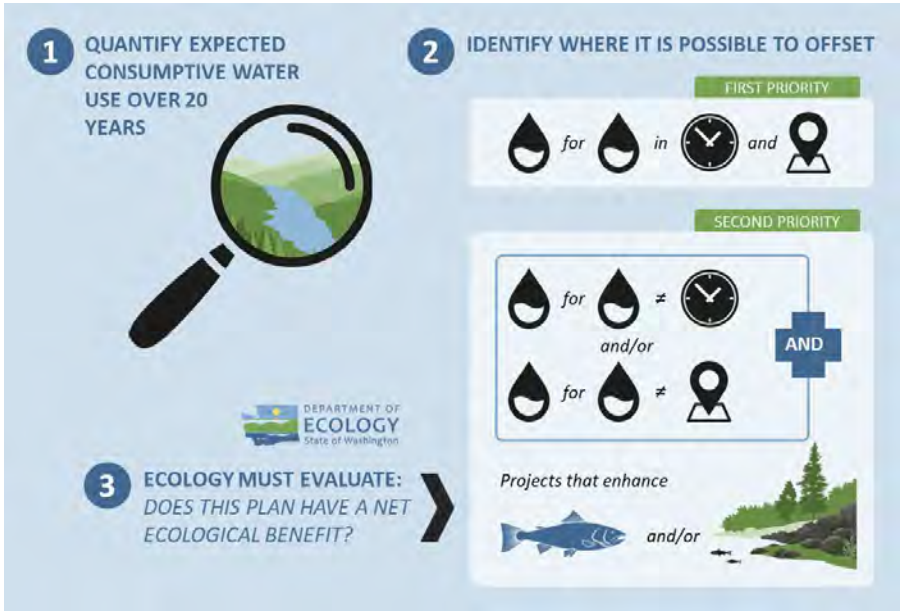


Basin Planning



5





How do you replace water?



Photo: USGS Measuring habitat in Goldsborough Creek to quantify streamflow.

Projects

- Water right acquisitions.
- Managed aquifer recharge.
- Water storage projects.
- Levee setbacks and floodplain reconnections.
- Habitat restoration.
- Water conservation and efficiencies.





Funding Program



11

Pilot Grant Round

- 46 applications received
- \$74M in project applications
- 16 projects approved
- \$21.3M funded



12

Upcoming Funding Opportunity

- **October:** Funding guidance available on website: <https://ecology.wa.gov>
- **Public Workshops (9 am-11 am)**
 - Nov. 1—Ecology HQ, Lacey
 - Nov. 4—Eastern Regional Office, Spokane
 - Nov. 5—Central Regional Office, Union Gap
 - Nov. 13—Northwest Regional Office, Bellevue
- **February - March 2020 - Funding opportunity open**



Project types

- Water right acquisitions
- Water storage.
- Altered water managemer or infrastructure.
- Watershed function, riparian and fish habitat improvements.
- Environmental monitoring
- Feasibility studies.





Creative Solutions



15



Goldsborough Creek

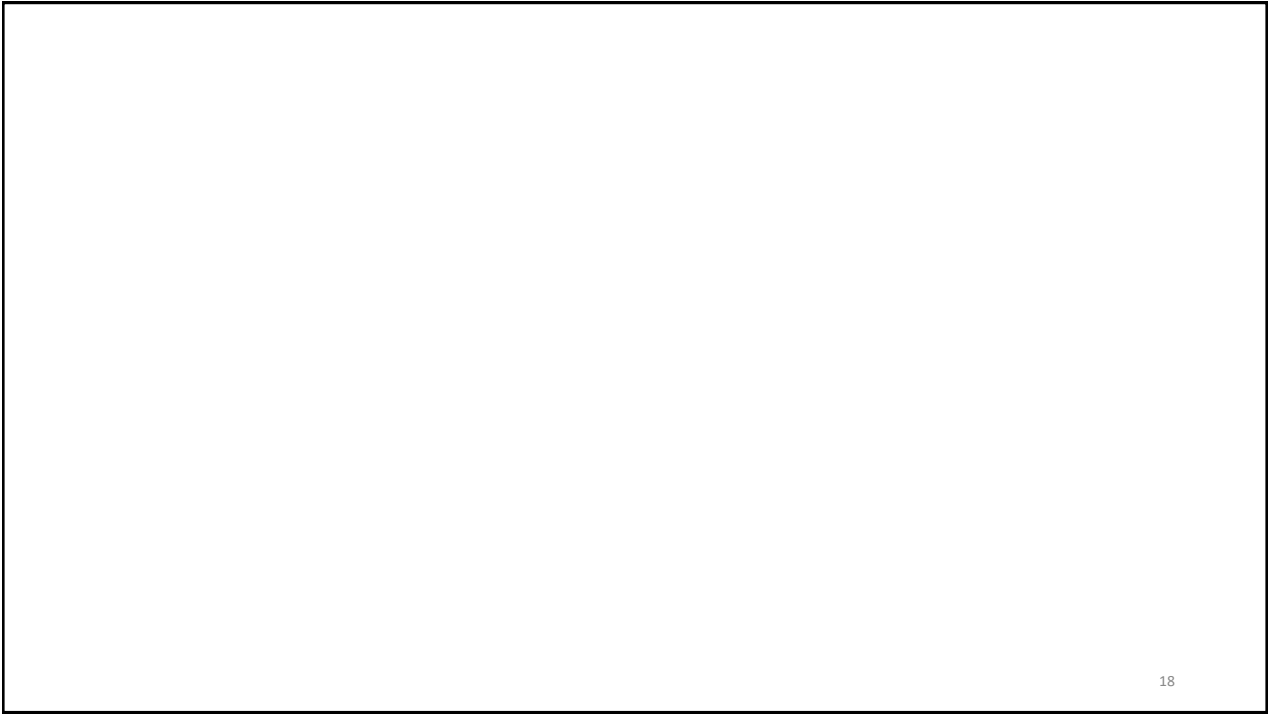
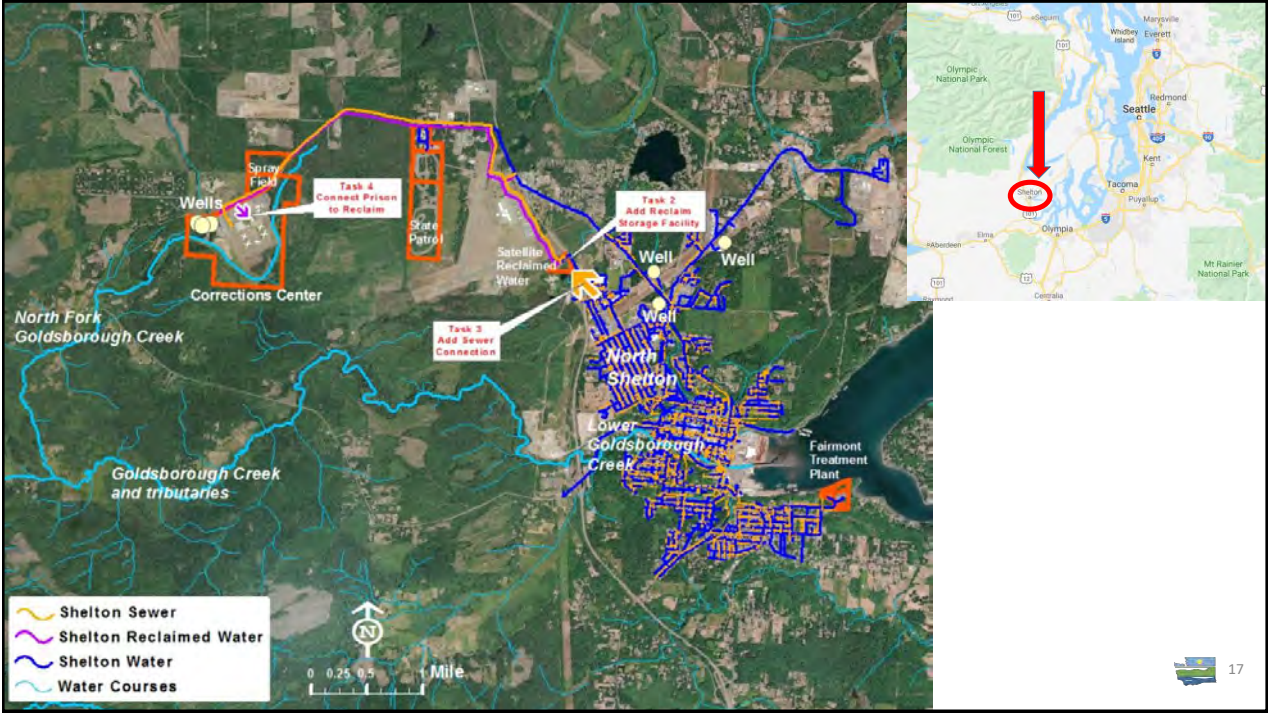
Water and fisheries

- Tribal Treaty resources
- Public resources

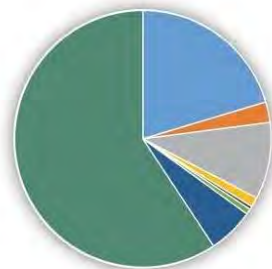
Photo: Squaxin Island Tribe. Goldsborough Creek is an important stream for Coho salmon and Cutthroat trout.



16



Water Use in Washington, 2015



Water Use Categories (USGS)

- EXPLANATION**
Water-use categories and (percentage of total water use)
- Public supply (20%)
 - Domestic (3%)
 - Industrial (10%)
 - Thermoelectric (1%)
 - Mining (<1%)
 - Livestock (1%)
 - Aquaculture (8%)
 - Irrigation (59%)



Population by county

- EXPLANATION**
Total population by county, in thousands
- 22-45.8
 - 71.1-212.3
 - 248.9-489.9
 - 770.5-865.6
 - 1,111.7



Total water withdrawals

- EXPLANATION**
Total water withdrawals, in million gallons per day
- 6.8-22.4
 - 27.4-85.2
 - 96.0-182.3
 - 238.8-498.6
 - 871.2



Water withdrawals per capita

- EXPLANATION**
Total per capita water withdrawals, in million gallons per day
- 107.6-203.1
 - 206.7-716.1
 - 1,200.0-2,280.8
 - 3,686.0-4,022.7
 - 6,626.8-8,302.2