

# Energy Retrofits for Public Buildings

Equitable grant access for communities

---

Kristen Kalbrener and Jill Eikenhorst

PROGRAM MANAGERS

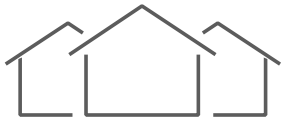
OCTOBER 18, 2021



Washington State  
Department of  
**Commerce**

# We strengthen communities

---



**HOUSING  
HOMELESSNESS**



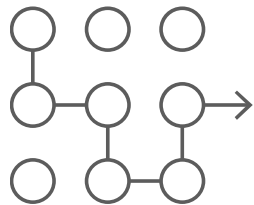
**INFRASTRUCTURE**



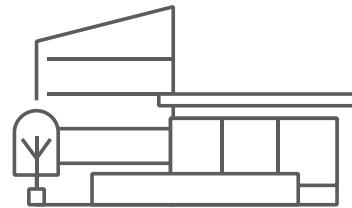
**BUSINESS  
ASSISTANCE**



**ENERGY**



**PLANNING**



**COMMUNITY FACILITIES**



**CRIME VICTIMS &  
PUBLIC SAFETY**



**COMMUNITY  
SERVICES**

# Introductions

---



Kristen Kalbrener



Jill Eikenhorst

## And you are?

- Please type in the chat:
  - First name
  - Name of entity or organization
  - Region/part of the state
  - Any group affiliation
  - Previous EE or Solar grant?

# Agenda

---

- **Program overview**
  - Question and answers
- **Program access and equity**
  - Definitions and background
  - Practices and plans
- **Input and discussion**
  - What should we know?



# Program overview



# Energy retrofits for public buildings

---



Energy Efficiency



Solar



State Project  
Improvements

# Eligible applicants

---

- Local governments
- Washington state higher education institutions
- School districts
- Tribal governments
- Washington state agencies
- Municipalities and districts
- Public hospitals



# Energy Efficiency

---

- **Project preferences:**
  - Use non-fossil fuels when possible and cost effective
  - Projects with higher savings and lower costs
  - New applicants
- **At least 20% of funds for small cities and towns**
- **Match required**





# Project example: Colville School District

---

- New heating system at Fort Colville Elementary School
- Lighting retrofit at four sites
- Cooling improvements at Colville High School
- \$233,772 grant
- \$701,315 match
- \$31,300 projected annual savings



# Solar

---

- **Project preferences:**
  - Higher savings and lower costs
  - New applicants
  - Equipment made in Washington
- **At least 20% of funds for small cities and towns**
- **Match required**



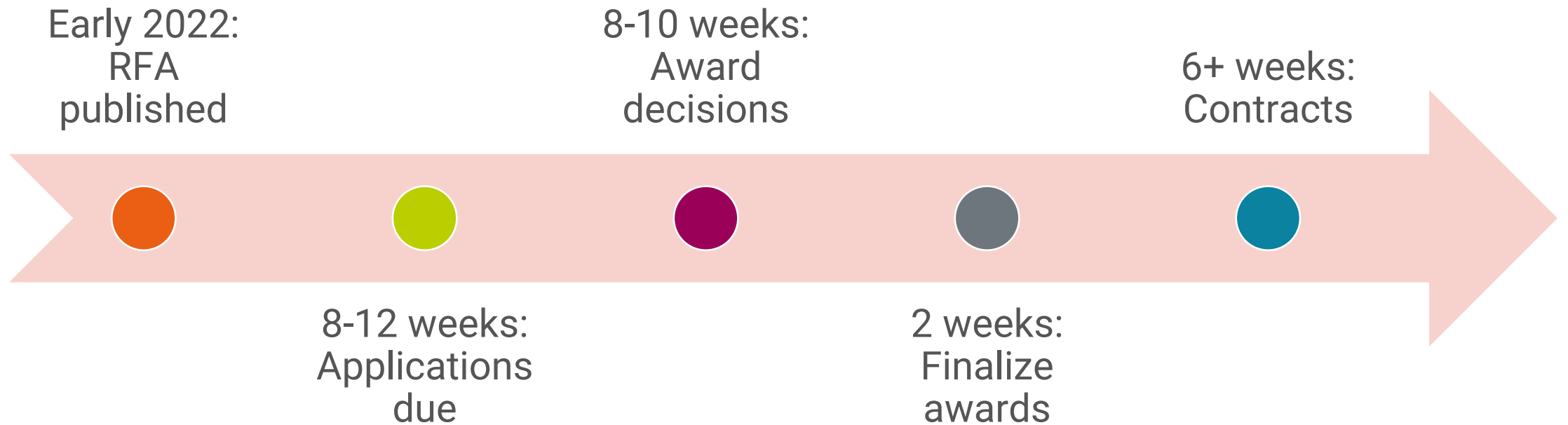
# Project example: Sequim Civic Center Solar

- 132 solar panels on the civic center
- \$3,700 saved annually
- 21.7 tons annual carbon reduction
- \$75,000 grant
- \$150,000 city funds



# Estimated timeline

---



# Program questions?

---

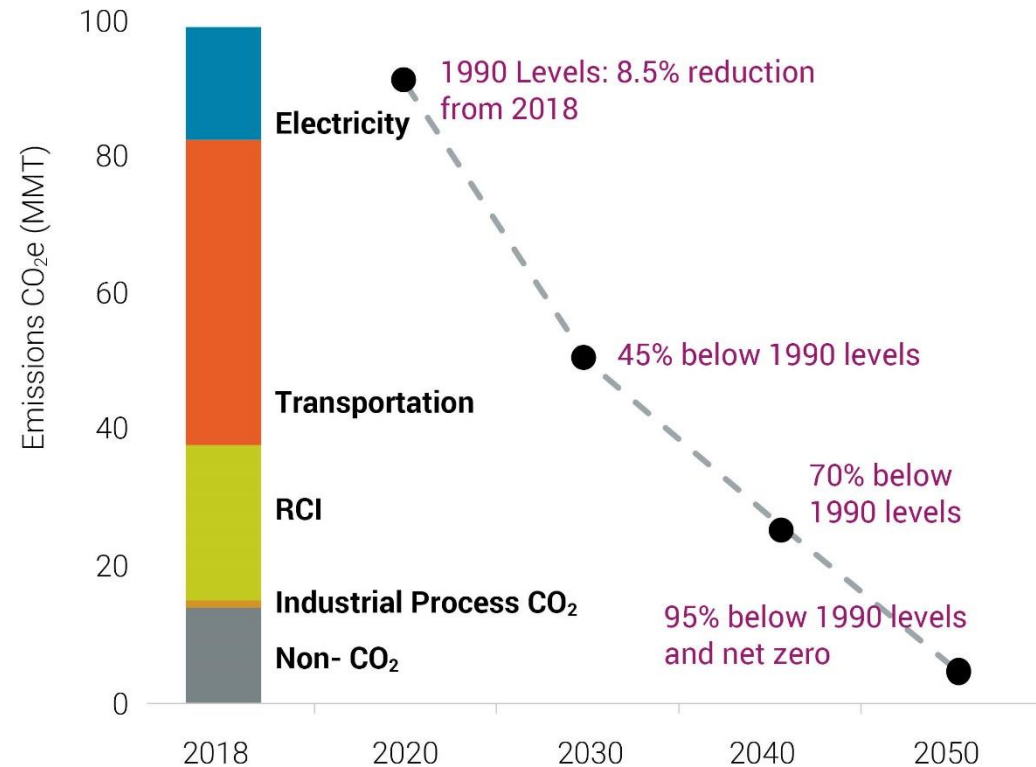


# Program access & equity

Definitions and background



# Washington energy strategy



Source: Washington State Department of Ecology and Washington State.  
Appendix A – Deep Decarbonization Pathways Modeling Technical Report, December 11, 2020 (p. 15).

- Coordinate among local, Tribal and state governments and regional organizations
- Build an equitable, inclusive and resilient clean energy economy

# Approach to equity

---

## PROCEDURAL

- Create processes that are transparent, fair and inclusive in developing and implementing any program, plan or policy
- Ensure that all people are treated openly and fairly
- Increase the civic engagement opportunities of communities that are disproportionately impacted by climate change

---

## DISTRIBUTIONAL

- Fairly distribute resources, benefits and burdens
- Prioritize resources for communities that experience the greatest inequities, disproportionate impacts and have the greatest unmet needs

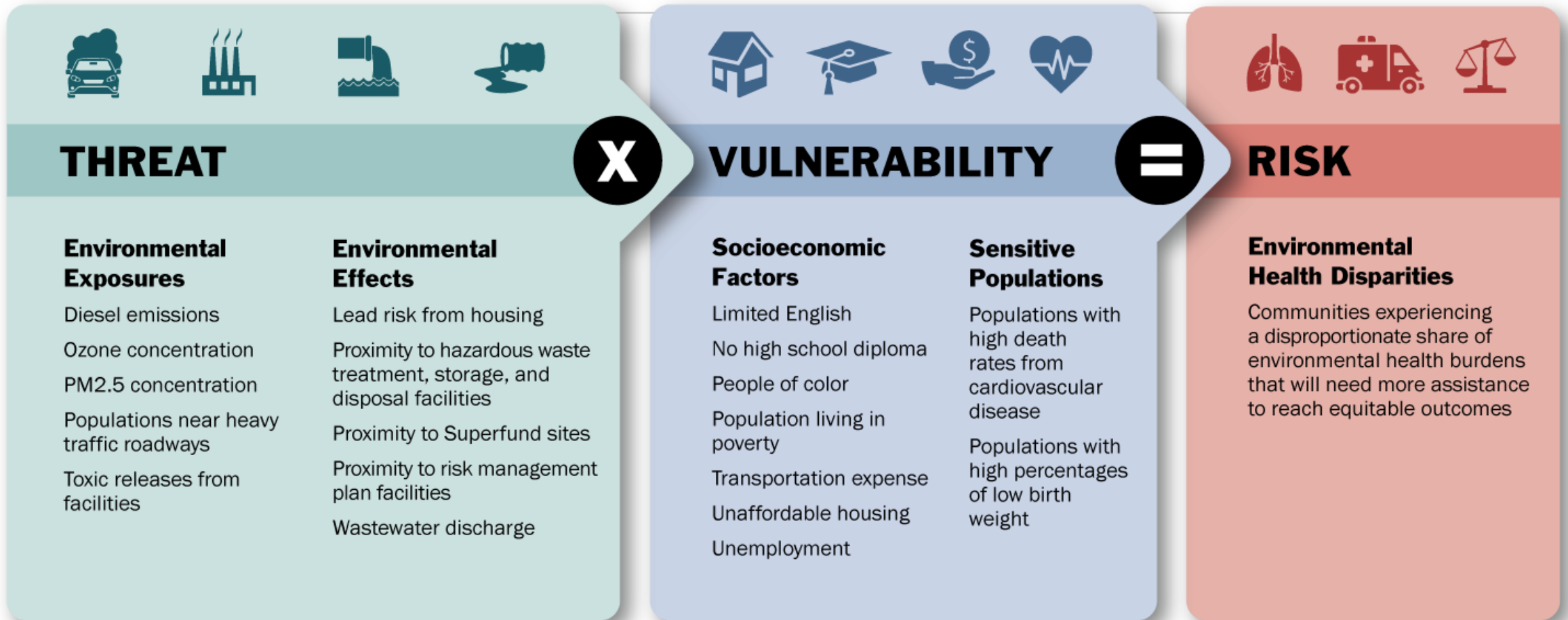
---

## STRUCTURAL

- Make a commitment to correct past harms and prevent future unintended consequences
  - Address the underlying structural and institutional systems that are the root causes of social and racial inequities
-

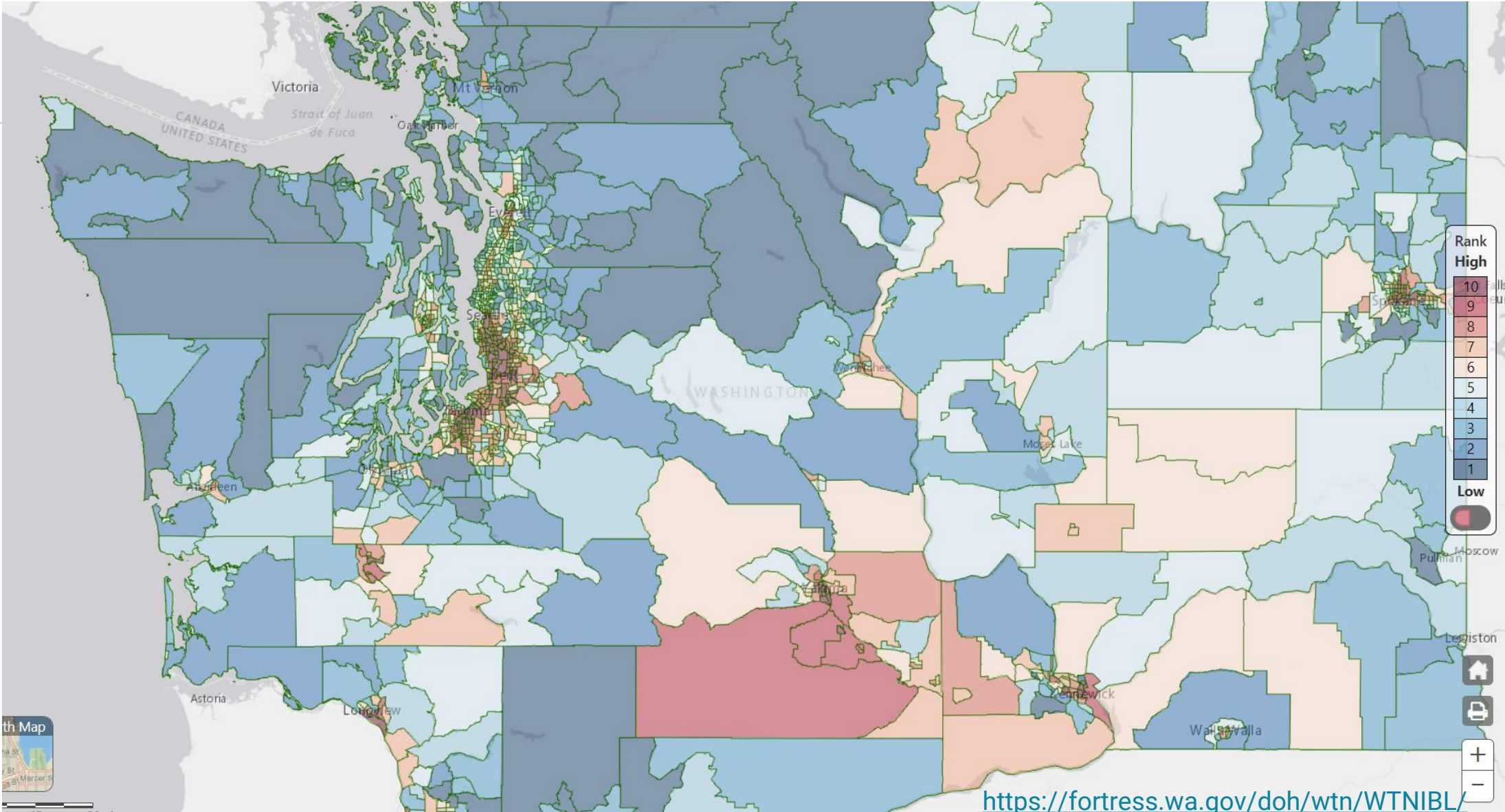


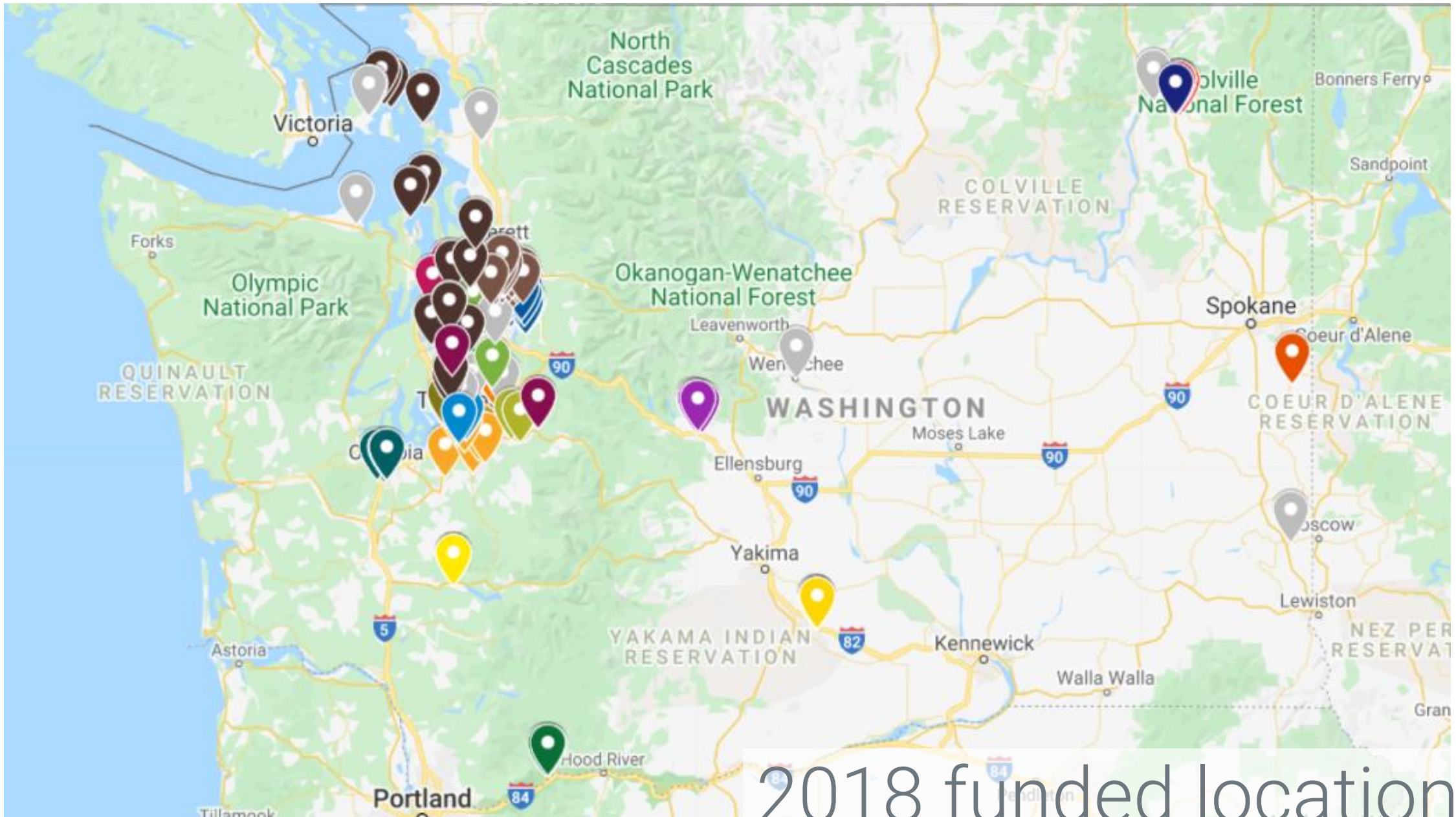
# Threat x Vulnerability = Risk



Department of Health

# Environmental health disparities map





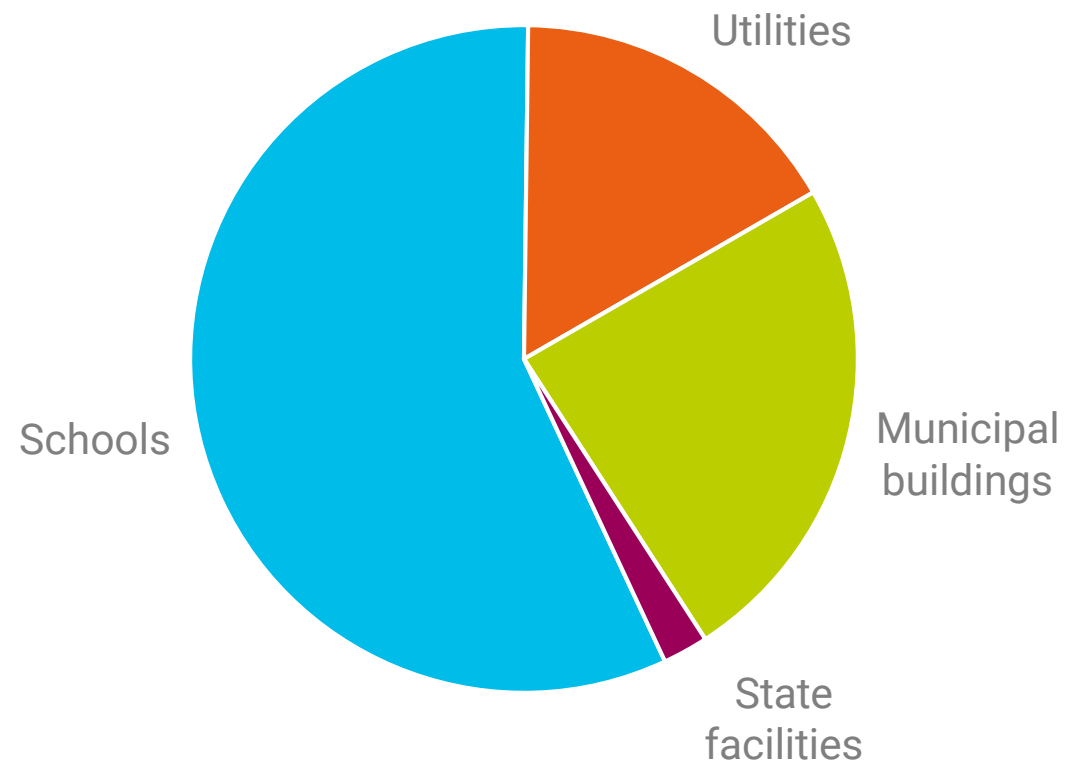
2018 funded locations

# Grant history since 2017

---

- 47 solar and energy efficiency grants executed since 2017
- 91 project sites
- \$14 million executed
- More than \$5 million in process right now

Number of sites by applicant type



# Program access & equity

Practices and plans



# Current practices: Increasing access

---

- Federally recognized Tribal governments now eligible
- Carve-outs for small towns and cities
- Lower match requirements for under-resourced applicants
- Simpler application requirements
- Increased lead time to develop projects

# Example: Application requirements

---

Structural engineering application no longer required before Solar 2021 application

- Removes cost barrier
- Fewer steps to complete







# Relationship building

---

We're available by phone outside of the active solicitation period.

- Tell us about your project
- Ask questions about the process
- Give us feedback



Jill: 360.522.0000



Solar



SPI

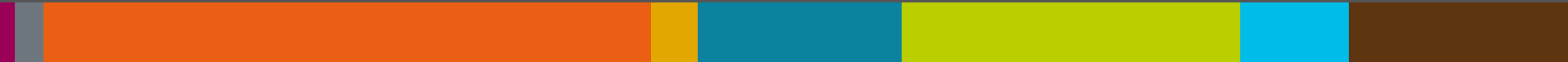


Kristen: 360.515.8112



Energy efficiency

# Input and discussion



# Community input

---

- What is your community thinking about right now?
- What priorities would these programs address?
- What barriers do you see in accessing these grants?

# Before you go

---

## Type into the chat:

- Are you interested in applying to Solar or Energy Efficiency?
- What is one thing you would like to change?

# Thank you!

**Kristen Kalbrener**

PROGRAM MANAGER, ENERGY EFFICIENCY

[Kristen.Kalbrener@commerce.wa.gov](mailto:Kristen.Kalbrener@commerce.wa.gov)

360.515.8112

**Jill Eikenhorst**

PROGRAM MANAGER, SOLAR AND SPI

[jill.eikenhorst@commerce.wa.gov](mailto:jill.eikenhorst@commerce.wa.gov)

360.522.0000



Washington State  
Department of  
**Commerce**

[www.commerce.wa.gov](http://www.commerce.wa.gov)

